



## STATUTORILY REQUIRED PLAN MAPS



# Plan BayArea 2040

FINAL  
SUPPLEMENTAL  
REPORT



Metropolitan  
Transportation  
Commission



Association  
of Bay Area  
Governments

JULY 2017

## Metropolitan Transportation Commission

**Jake Mackenzie, Chair**  
Sonoma County and Cities

**Scott Haggerty, Vice Chair**  
Alameda County

**Alicia C. Aguirre**  
Cities of San Mateo County

**Tom Azumbrado**  
U.S. Department of Housing  
and Urban Development

**Jeannie Bruins**  
Cities of Santa Clara County

**Damon Connolly**  
Marin County and Cities

**Dave Cortese**  
Santa Clara County

**Carol Dutra-Vernaci**  
Cities of Alameda County

**Dorene M. Giacomini**  
U.S. Department of Transportation

**Federal D. Glover**  
Contra Costa County

**Anne W. Halsted**  
San Francisco Bay Conservation  
and Development Commission

**Nick Josefowitz**  
San Francisco Mayor's Appointee

**Jane Kim**  
City and County of San Francisco

**Sam Liccardo**  
San Jose Mayor's Appointee

**Alfredo Pedroza**  
Napa County and Cities

**Julie Pierce**  
Association of Bay Area  
Governments

**Bijan Sartipi**  
California State  
Transportation Agency

**Libby Schaaf**  
Oakland Mayor's Appointee

**Warren Slocum**  
San Mateo County

**James P. Spering**  
Solano County and Cities

**Amy R. Worth**  
Cities of Contra Costa County

## Association of Bay Area Governments

**Councilmember Julie Pierce**  
**ABAG President**  
City of Clayton

**Supervisor David Rabbitt**  
**ABAG Vice President**  
County of Sonoma

### Representatives From Each County

**Supervisor Scott Haggerty**  
Alameda

**Supervisor Nathan Miley**  
Alameda

**Supervisor Candace Andersen**  
Contra Costa

**Supervisor Karen Mitchoff**  
Contra Costa

**Supervisor Dennis Rodoni**  
Marin

**Supervisor Belia Ramos**  
Napa

**Supervisor Norman Yee**  
San Francisco

**Supervisor David Canepa**  
San Mateo

**Supervisor Dave Pine**  
San Mateo

**Supervisor Cindy Chavez**  
Santa Clara

**Supervisor David Cortese**  
Santa Clara

**Supervisor Erin Hannigan**  
Solano

### Representatives From Cities in Each County

**Mayor Trish Spencer**  
City of Alameda / Alameda

**Mayor Barbara Halliday**  
City of Hayward / Alameda

**Vice Mayor Dave Hudson**  
City of San Ramon / Contra Costa

**Councilmember Pat Eklund**  
City of Novato / Marin

**Mayor Leon Garcia**  
City of American Canyon / Napa

**Mayor Edwin Lee**  
City and County of San Francisco

**John Rahaim, Planning Director**  
City and County of San Francisco

**Todd Rufo, Director, Economic  
and Workforce Development,  
Office of the Mayor**  
City and County of San Francisco

**Mayor Wayne Lee**  
City of Millbrae / San Mateo

**Mayor Pradeep Gupta**  
City of South San Francisco / San  
Mateo

**Mayor Liz Gibbons**  
City of Campbell / Santa Clara

**Mayor Greg Scharff**  
City of Palo Alto / Santa Clara

**Len Augustine, Mayor**  
City of Vacaville / Solano

**Mayor Jake Mackenzie**  
City of Rohnert Park / Sonoma

**Councilmember  
Annie Campbell Washington**  
City of Oakland

**Councilmember  
Lynette Gibson McElhaney**  
City of Oakland

**Councilmember Abel Guillen**  
City of Oakland

**Councilmember Raul Peralez**  
City of San Jose

**Councilmember Sergio Jimenez**  
City of San Jose

**Councilmember Lan Diep**  
City of San Jose

### Advisory Members

**William Kissinger**  
Regional Water Quality  
Control Board



MAP S-1  
Jobs  
per Acre:  
2040

Very Low (1-30 Jobs/Acre)

Low (30-150 Jobs/Acre)

Medium (150-300 Jobs/Acre)

Medium High (300-600 Jobs/Acre)

High (600-900 Jobs/Acre)

Very High (>900 Jobs/Acre)

ROADS

Freeway

Major Road

Oakland

> 350,000

Novato

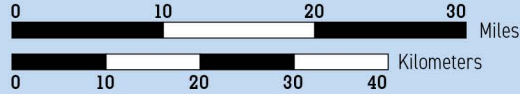
50,000-350,000

Pacifica

<50,000

20 June 2017  
Source: MTC/ABAG 2017

<http://arcg.is/1raGea>



Map is for general information. For more information on local zoning or designations for a particular site or parcel, please contact your city or county.

MAP S-2  
Change in  
Jobs per Acre:  
2010 to 2040

Very Low (1-8 Jobs/Acre)

Low (8-10 Jobs/Acre)

Medium (10-30 Jobs/Acre)

Medium High (30-60 Jobs/Acre)

High (60-85 Jobs/Acre)

Very High (>85 Jobs/Acre)

ROADS

Freeway

Major Road

Oakland

> 350,000

Novato

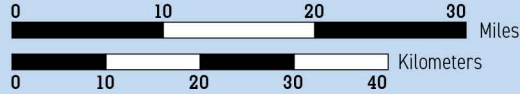
50,000-350,000

Pacifica

<50,000

20 June 2017  
Source: MTC/ABAG 2017

<http://arcg.is/1ebyP4>



Map is for general information. For more information on local zoning or designations for a particular site or parcel, please contact your city or county.



MAP S-3  
Households  
per Acre: 2040

HOUSEHOLDS PER ACRE

Very Low (1-8 Units/Acre)

Low (8-10 Units/Acre)

Medium (10-30 Units/Acre)

Medium High (30-60 Units/Acre)

High (60-85 Units/Acre)

Very High (>85 Units/Acre)

ROADS

Freeway

Major Road

Oakland

> 350,000

Novato

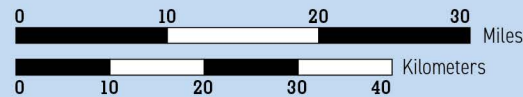
50,000-350,000

Pacifica

<50,000

20 June 2017  
Source: MTC/ABAG 2017

<http://arcg.is/1uuiPu>



Map is for general information. For more information on local zoning or designations for a particular site or parcel, please contact your city or county.

MAP S-4  
Change in  
Households  
per Acre:  
2010 to 2040

CHANGE IN  
HOUSEHOLDS PER ACRE

Very Low (1-8 Units/Acre)

Low (8-10 Units/Acre)

Medium (10-30 Units/Acre)

Medium High (30-60 Units/Acre)

High (60-85 Units/Acre)

Very High (>85 Units/Acre)

ROADS

Freeway

Major Road

Oakland

> 350,000

Novato

50,000-350,000

Pacifica

<50,000

20 June 2017  
Source: MTC/ABAG 2017

<http://arcg.is/vWqyC>



Map is for general information. For more information on local zoning or designations for a particular site or parcel, please contact your city or county.



MAP S-5

# Policy Protections

## Alameda County

### CONSERVATION LANDS

Parks, open space, Williamson Act lands, and easements

### CRITICAL HABITAT

Final critical habitat for various species identified by U.S. Fish & Wildlife Service

### PRIORITY CONSERVATION AREAS

As identified by cities, towns, and counties in coordination with the Association for Bay Area Governments

### FLOOD RISK AREAS

Areas where Federal Flood Insurance is required for development projects

### Oakland

### Sunnyvale

### Albany

### POPULATION

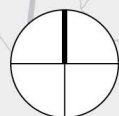
Over 350,000

50,000 to 350,000

Less than 50,000

MTCGIS/TB/KS October 2016

0 1 2 3 Miles  
0 2 4 Kilometers



Map is for general information. For more information on local zoning or designations for a particular site or parcel, please contact your city or county.



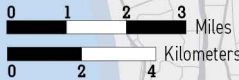
MAP S-6

# Policy Protections Contra Costa County

-  **CONSERVATION LANDS**  
Parks, open space, Williamson Act lands, and easements
-  **CRITICAL HABITAT**  
Final critical habitat for various species identified by U.S. Fish & Wildlife Service
-  **PRIORITY CONSERVATION AREAS**  
As identified by cities, towns, and counties in coordination with the Association for Bay Area Governments
-  **FLOOD RISK AREAS**  
Areas where Federal Flood Insurance is required for development projects

	POPULATION
<b>Oakland</b>	Over 350,000
<b>Sunnyvale</b>	50,000 to 350,000
<b>Albany</b>	Less than 50,000

MT/GIS/TB/KS October 2016



Map is for general information. For more information on local zoning or designations for a particular site or parcel, please contact your city or county.



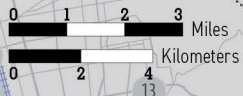
MAP S-7

# Policy Protections Marin County

-  **CONSERVATION LANDS**  
Parks, open space, Williamson Act lands, and easements
-  **CRITICAL HABITAT**  
Final critical habitat for various species identified by U.S. Fish & Wildlife Service
-  **PRIORITY CONSERVATION AREAS**  
As identified by cities, towns, and counties in coordination with the Association for Bay Area Governments
-  **FLOOD RISK AREAS**  
Areas where Federal Flood Insurance is required for development projects

	POPULATION
<b>Oakland</b>	Over 350,000
<b>Sunnyvale</b>	50,000 to 350,000
<b>Albany</b>	Less than 50,000

MTCGIS/TB/KS, October 2016



Map is for general information. For more information on local zoning or designations for a particular site or parcel, please contact your city or county.



MAP S-8

# Policy Protections

## Napa County



**CONSERVATION LANDS**  
Parks, open space, Williamson Act lands, and easements



**CRITICAL HABITAT**  
Final critical habitat for various species identified by U.S. Fish & Wildlife Service



**PRIORITY CONSERVATION AREAS**  
As identified by cities, towns, and counties in coordination with the Association for Bay Area Governments

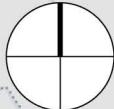
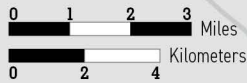


**FLOOD RISK AREAS**  
Areas where Federal Flood Insurance is required for development projects

**Oakland**  
**Sunnyvale**  
**Albany**

**POPULATION**  
Over 350,000  
50,000 to 350,000  
Less than 50,000

MTCGIS/TB/KS October 2016



Map is for general information. For more information on local zoning or designations for a particular site or parcel, please contact your city or county.



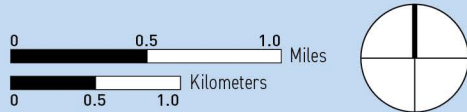
MAP S-9

# Policy Protections San Francisco

- **CONSERVATION LANDS**  
Parks, open space, Williamson Act lands, and easements
- **CRITICAL HABITAT**  
Final critical habitat for various species identified by U.S. Fish & Wildlife Service
- **PRIORITY CONSERVATION AREAS**  
As identified by cities, towns, and counties in coordination with the Association for Bay Area Governments
- **FLOOD RISK AREAS**  
Areas where Federal Flood Insurance is required for development projects

	POPULATION
<b>Oakland</b>	Over 350,000
<b>Sunnyvale</b>	50,000 to 350,000
<b>Albany</b>	Less than 50,000

MTCGIS/TB/KS October 2016



Map is for general information. For more information on local zoning or designations for a particular site or parcel, please contact your city or county.




MAP S-10

# Policy Protections


## San Mateo County




**CONSERVATION LANDS**  
Parks, open space, Williamson Act lands, and easements



**CRITICAL HABITAT**  
Final critical habitat for various species identified by U.S. Fish & Wildlife Service



**PRIORITY CONSERVATION AREAS**  
As identified by cities, towns, and counties in coordination with the Association for Bay Area Governments

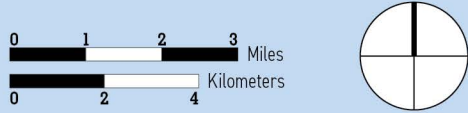


**FLOOD RISK AREAS**  
Areas where Federal Flood Insurance is required for development projects

**Oakland**  
**Sunnyvale**  
Albany

**POPULATION**  
Over 350,000  
50,000 to 350,000  
Less than 50,000

MTCGIS/TB/KS October 2016

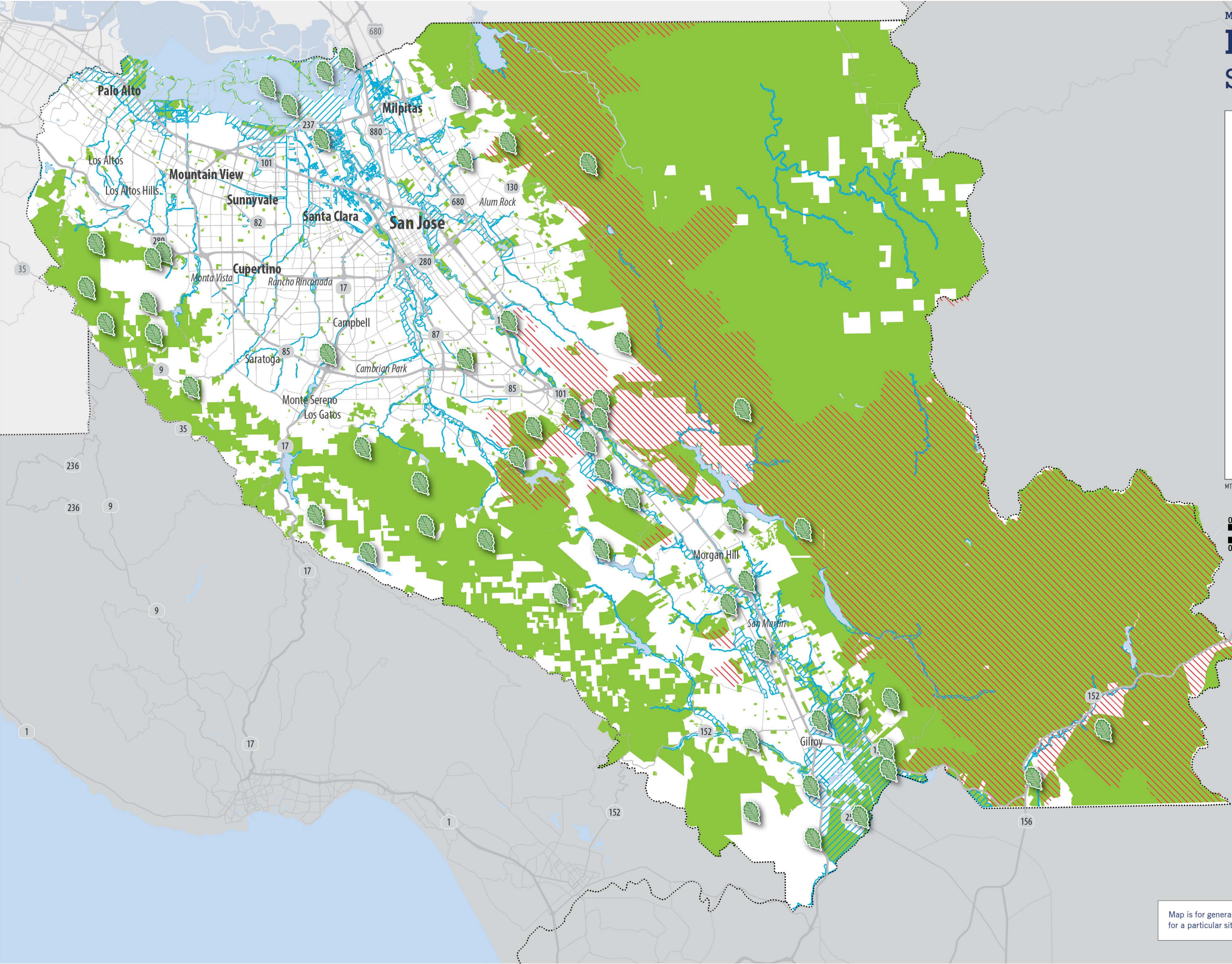


Map is for general information. For more information on local zoning or designations for a particular site or parcel, please contact your city or county.



# Policy Protections

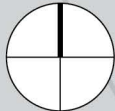
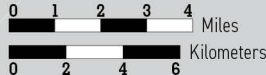
## Santa Clara County



-  **CONSERVATION LANDS**  
Parks, open space, Williamson Act lands, and easements
-  **CRITICAL HABITAT**  
Final critical habitat for various species identified by U.S. Fish & Wildlife Service
-  **PRIORITY CONSERVATION AREAS**  
As identified by cities, towns, and counties in coordination with the Association for Bay Area Governments
-  **FLOOD RISK AREAS**  
Areas where Federal Flood Insurance is required for development projects

	POPULATION
<b>Oakland</b>	Over 350,000
<b>Sunnyvale</b>	50,000 to 350,000
<b>Albany</b>	Less than 50,000

MTCGIS/TB/KS October 2016



Map is for general information. For more information on local zoning or designations for a particular site or parcel, please contact your city or county.



MAP S-12

# Policy Protections

## Solano County



**CONSERVATION LANDS**  
Parks, open space, Williamson Act lands, and easements



**CRITICAL HABITAT**  
Final critical habitat for various species identified by U.S. Fish & Wildlife Service



**PRIORITY CONSERVATION AREAS**  
As identified by cities, towns, and counties in coordination with the Association for Bay Area Governments



**FLOOD RISK AREAS**  
Areas where Federal Flood Insurance is required for development projects

**Oakland**  
**Sunnyvale**  
Albany

**POPULATION**  
Over 350,000  
50,000 to 350,000  
Less than 50,000

MTG/GIS/TB/KS October 2016

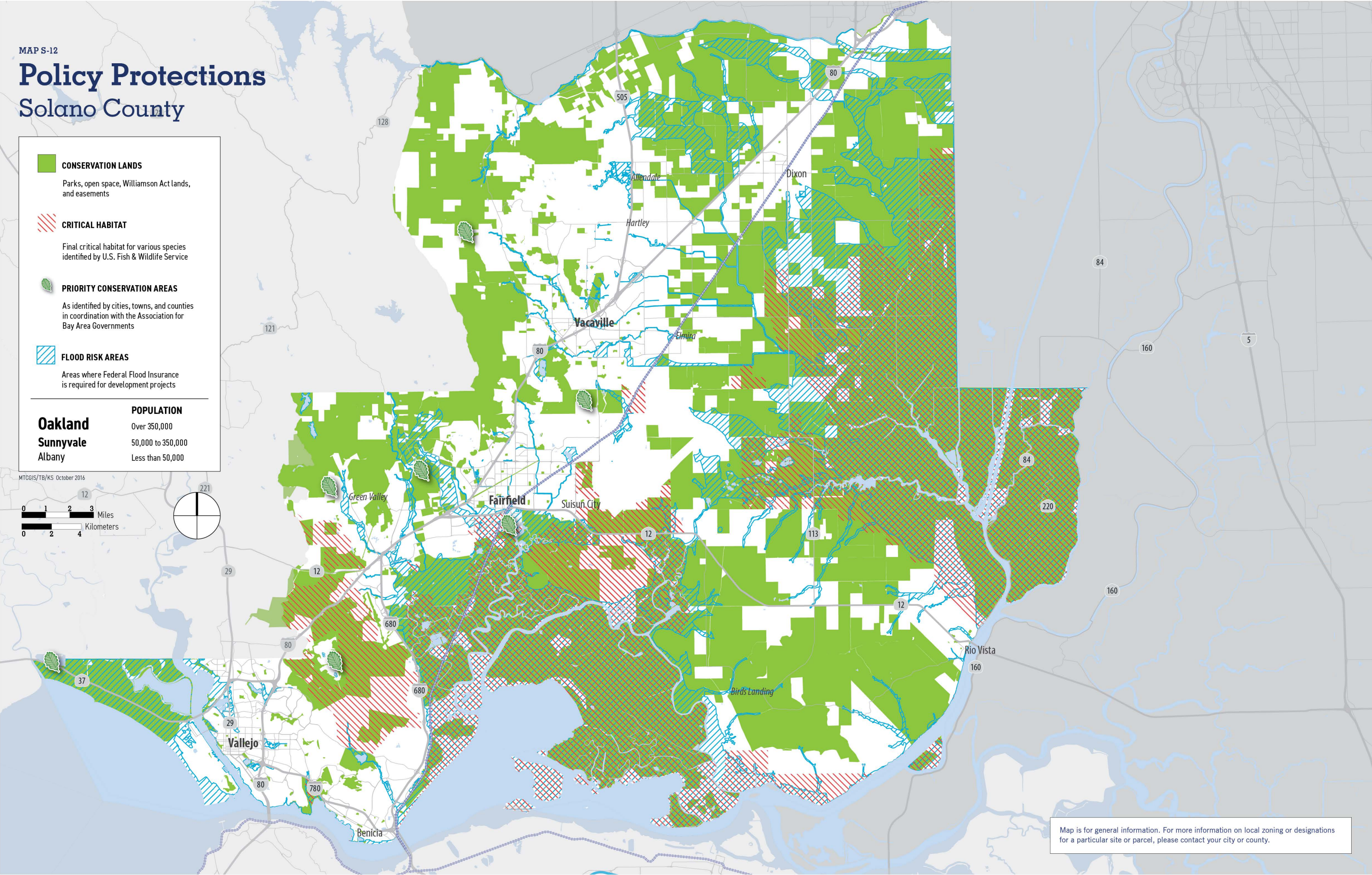
0123

Miles

024

Kilometers





Map is for general information. For more information on local zoning or designations for a particular site or parcel, please contact your city or county.



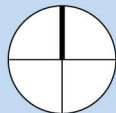
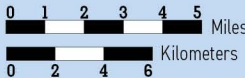
MAP S-13

# Policy Protections Sonoma County

-  **CONSERVATION LANDS**  
Parks, open space, Williamson Act lands, and easements
-  **CRITICAL HABITAT**  
Final critical habitat for various species identified by U.S. Fish & Wildlife Service
-  **PRIORITY CONSERVATION AREAS**  
As identified by cities, towns, and counties in coordination with the Association for Bay Area Governments
-  **FLOOD RISK AREAS**  
Areas where Federal Flood Insurance is required for development projects

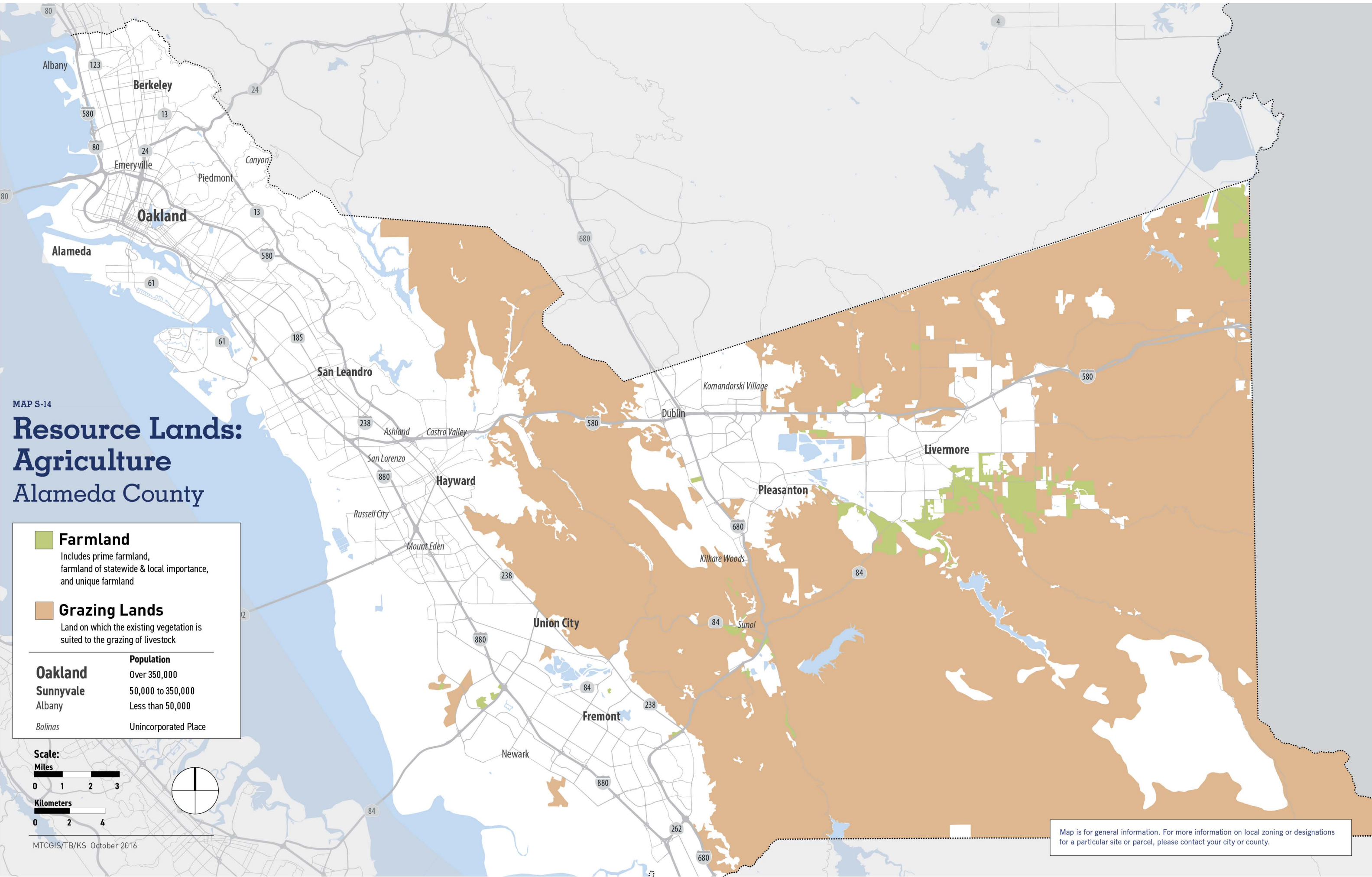
	POPULATION
<b>Oakland</b>	Over 350,000
<b>Sunnyvale</b>	50,000 to 350,000
<b>Albany</b>	Less than 50,000

MTGIS/TB/KS October 2016



Map is for general information. For more information on local zoning or designations for a particular site or parcel, please contact your city or county.





MAP S-14

# Resource Lands: Agriculture Alameda County

**Farmland**  
Includes prime farmland,  
farmland of statewide & local importance,  
and unique farmland

**Grazing Lands**  
Land on which the existing vegetation is  
suited to the grazing of livestock

	Population
<b>Oakland</b>	Over 350,000
<b>Sunnyvale</b>	50,000 to 350,000
<b>Albany</b>	Less than 50,000
<i>Bolinas</i>	Unincorporated Place

**Scale:**  
**Miles**  
0 1 2 3  
**Kilometers**  
0 2 4



Map is for general information. For more information on local zoning or designations  
for a particular site or parcel, please contact your city or county.

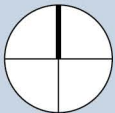


MAP S-15

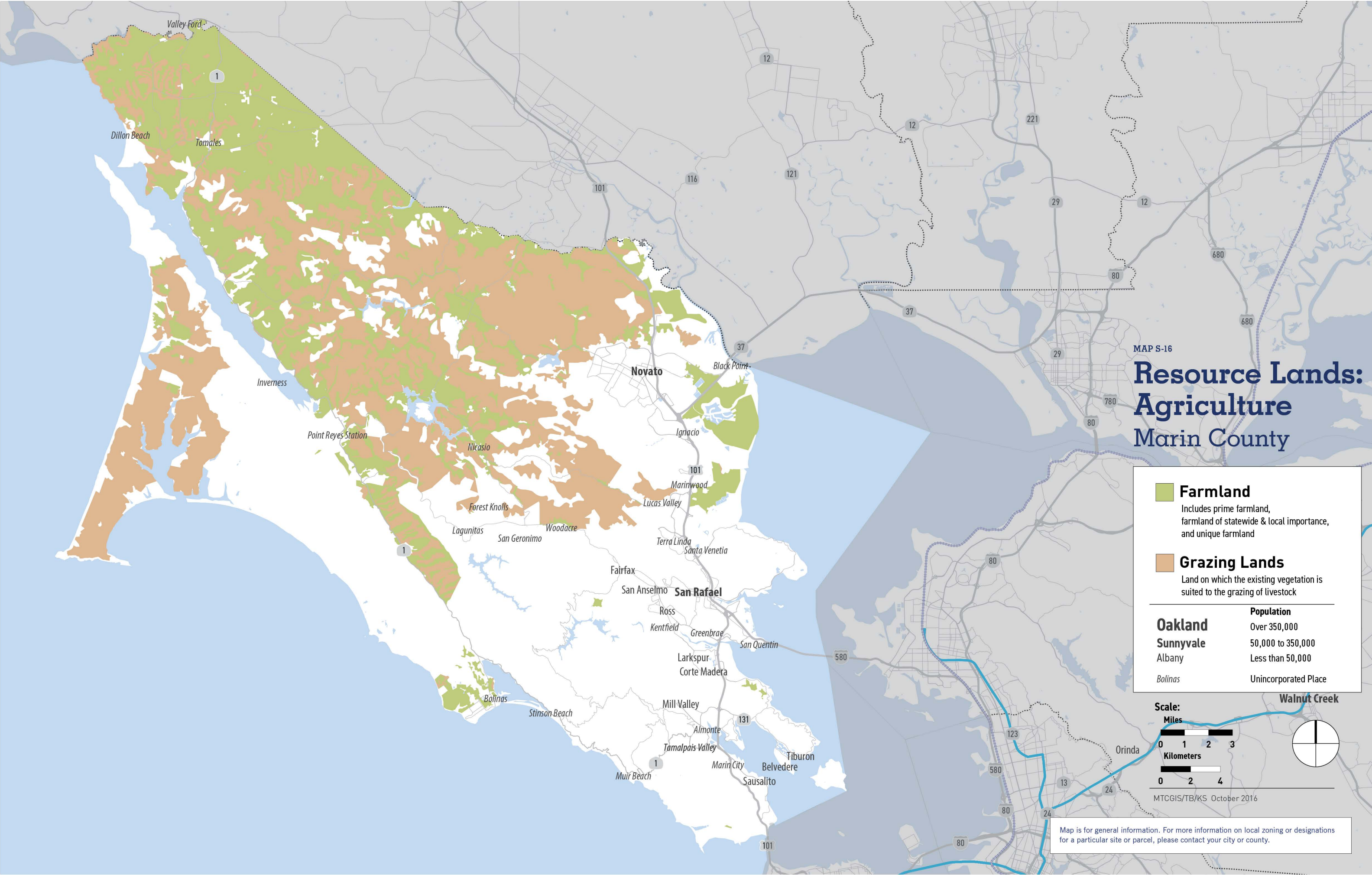
# Resource Lands: Agriculture Contra Costa County

- Farmland**  
Includes prime farmland,  
farmland of statewide & local importance,  
and unique farmland
- Grazing Lands**  
Land on which the existing vegetation is  
suited to the grazing of livestock

	Population
<b>Oakland</b>	Over 350,000
<b>Sunnyvale</b>	50,000 to 350,000
<b>Albany</b>	Less than 50,000
<i>Bolinas</i>	Unincorporated Place





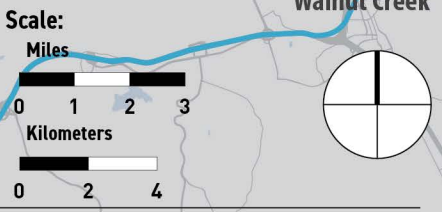


MAP S-16

# Resource Lands: Agriculture Marin County

- Farmland**  
Includes prime farmland, farmland of statewide & local importance, and unique farmland
- Grazing Lands**  
Land on which the existing vegetation is suited to the grazing of livestock

	Population
<b>Oakland</b>	Over 350,000
<b>Sunnyvale</b>	50,000 to 350,000
<b>Albany</b>	Less than 50,000
<i>Bolinas</i>	Unincorporated Place



MTCGIS/TB/KS October 2016

Map is for general information. For more information on local zoning or designations for a particular site or parcel, please contact your city or county.



MAP S-17

# Resource Lands: Agriculture Napa County

**Farmland**

Includes prime farmland, farmland of statewide & local importance, and unique farmland

**Grazing Lands**

Land on which the existing vegetation is suited to the grazing of livestock

**Oakland**

**Sunnyvale**

Albany

*Bolinas*

**Population**

Over 350,000

50,000 to 350,000

Less than 50,000

Unincorporated Place

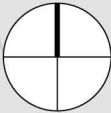
**Scale:**

Miles

0 1 2 3

Kilometers

0 2 4



MTGIS/TB/KS October 2016

Map is for general information. For more information on local zoning or designations for a particular site or parcel, please contact your city or county.



# Resource Lands: Agriculture San Mateo County

**Farmland**

Includes prime farmland, farmland of statewide & local importance, and unique farmland

**Grazing Lands**

Land on which the existing vegetation is suited to the grazing of livestock

**Oakland**

**Population**

Over 350,000

**Sunnyvale**

50,000 to 350,000

**Albany**

Less than 50,000

*Bolinas*

Unincorporated Place

**Scale:**

**Miles**



**Kilometers**



MTCGIS/TB/KS October 2016

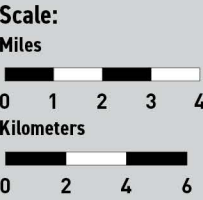
Map is for general information. For more information on local zoning or designations for a particular site or parcel, please contact your city or county.



# Resource Lands: Agriculture Santa Clara County

- Farmland**  
Includes prime farmland,  
farmland of statewide & local importance,  
and unique farmland
- Grazing Lands**  
Land on which the existing vegetation is  
suited to the grazing of livestock

	Population
<b>Oakland</b>	Over 350,000
<b>Sunnyvale</b>	50,000 to 350,000
<b>Albany</b>	Less than 50,000
<i>Bolinas</i>	Unincorporated Place



MTCGIS/TB/KS October 2016

Map is for general information. For more information on local zoning or designations for a particular site or parcel, please contact your city or county.



# Resource Lands: Agriculture Solano County

## Farmland

Includes prime farmland, farmland of statewide & local importance, and unique farmland

## Grazing Lands

Land on which the existing vegetation is suited to the grazing of livestock

## Oakland

## Sunnyvale

## Albany

## Bolinas

## Population

Over 350,000

50,000 to 350,000

Less than 50,000

Unincorporated Place

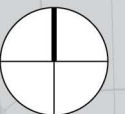
## Scale:

## Miles

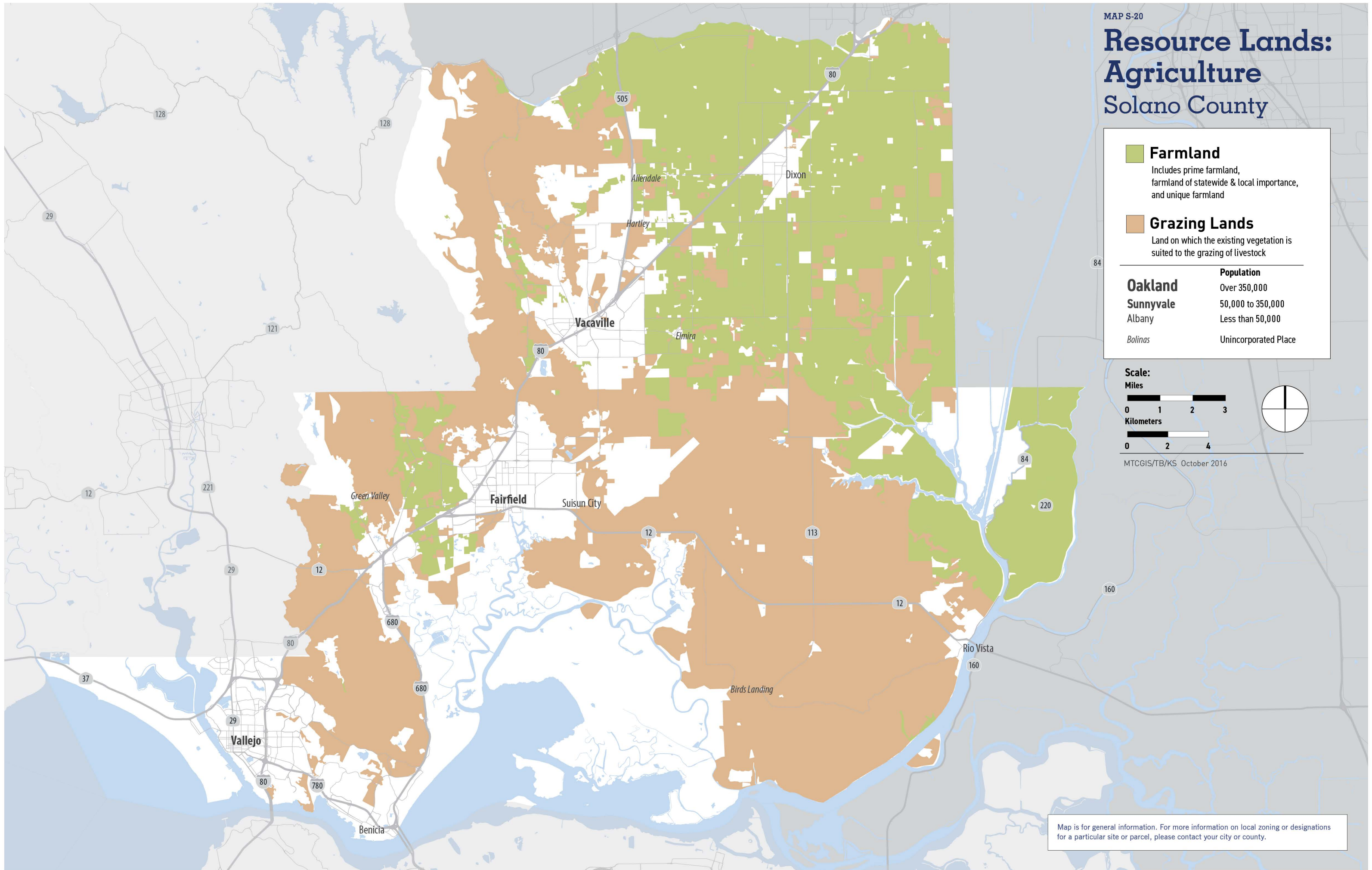
0 1 2 3

## Kilometers

0 2 4



MTCGIS/TB/KS October 2016



Map is for general information. For more information on local zoning or designations for a particular site or parcel, please contact your city or county.



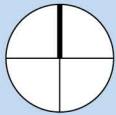
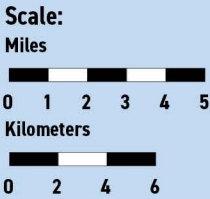
MAP S-21

# Resource Lands: Agriculture Sonoma County

**Farmland**  
Includes prime farmland,  
farmland of statewide & local importance,  
and unique farmland

**Grazing Lands**  
Land on which the existing vegetation is  
suited to the grazing of livestock

<b>Oakland</b>	Population
<b>Sunnyvale</b>	Over 350,000
<b>Albany</b>	50,000 to 350,000
<i>Bolinas</i>	Less than 50,000
	Unincorporated Place



Map is for general information. For more information on local zoning or designations for a particular site or parcel, please contact your city or county.



