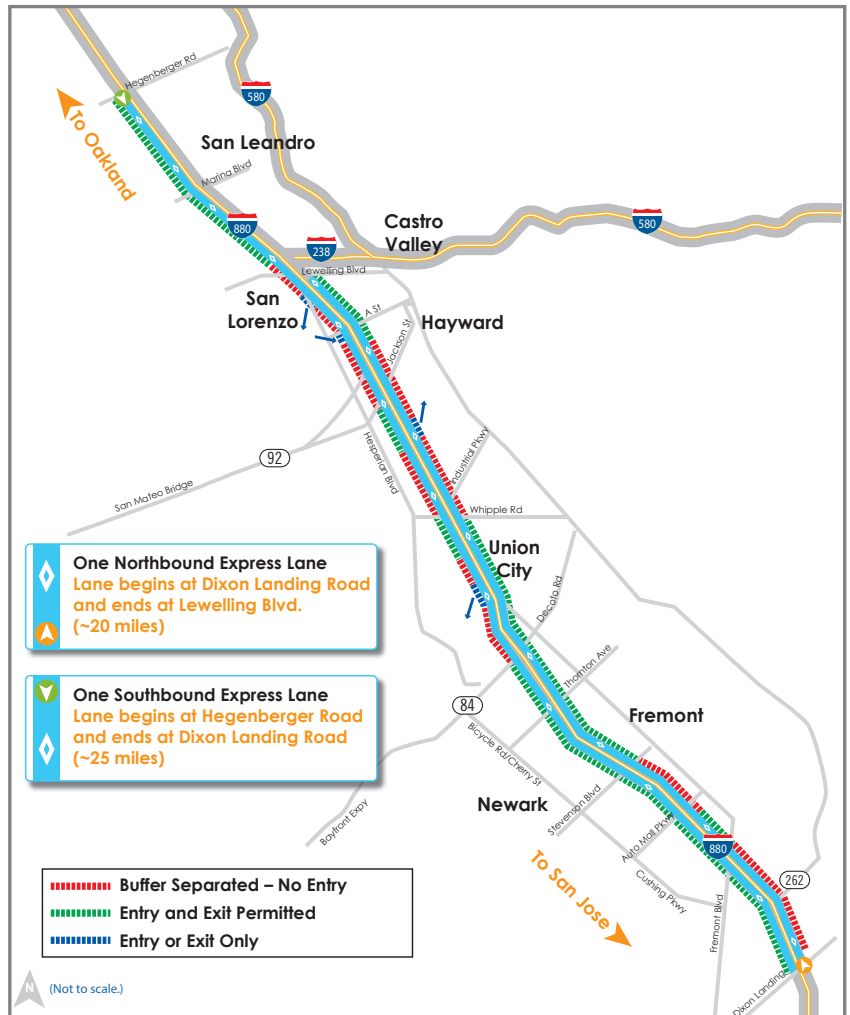


- LEGEND**
- █ Existing Express Lane
 - █ Express Lane Projects Under Construction
 - █ Near-term Express Lane Projects (By 2025)
 - ⋯ Mid-term Express Lane Projects (By 2035)
 - - - Long-term Express Lane Projects (After 2035)

2035 BAY AREA EXPRESS LANES BUILD OUT

I-880 PROJECT DETAIL MAP



One Northbound Express Lane
Lane begins at Dixon Landing Road and ends at Lewelling Blvd. (~20 miles)

One Southbound Express Lane
Lane begins at Hegenberger Road and ends at Dixon Landing Road (~25 miles)

- - - Buffer Separated – No Entry
- █ Entry and Exit Permitted
- █ Entry or Exit Only

(Not to scale.)

PROJECT DESCRIPTION

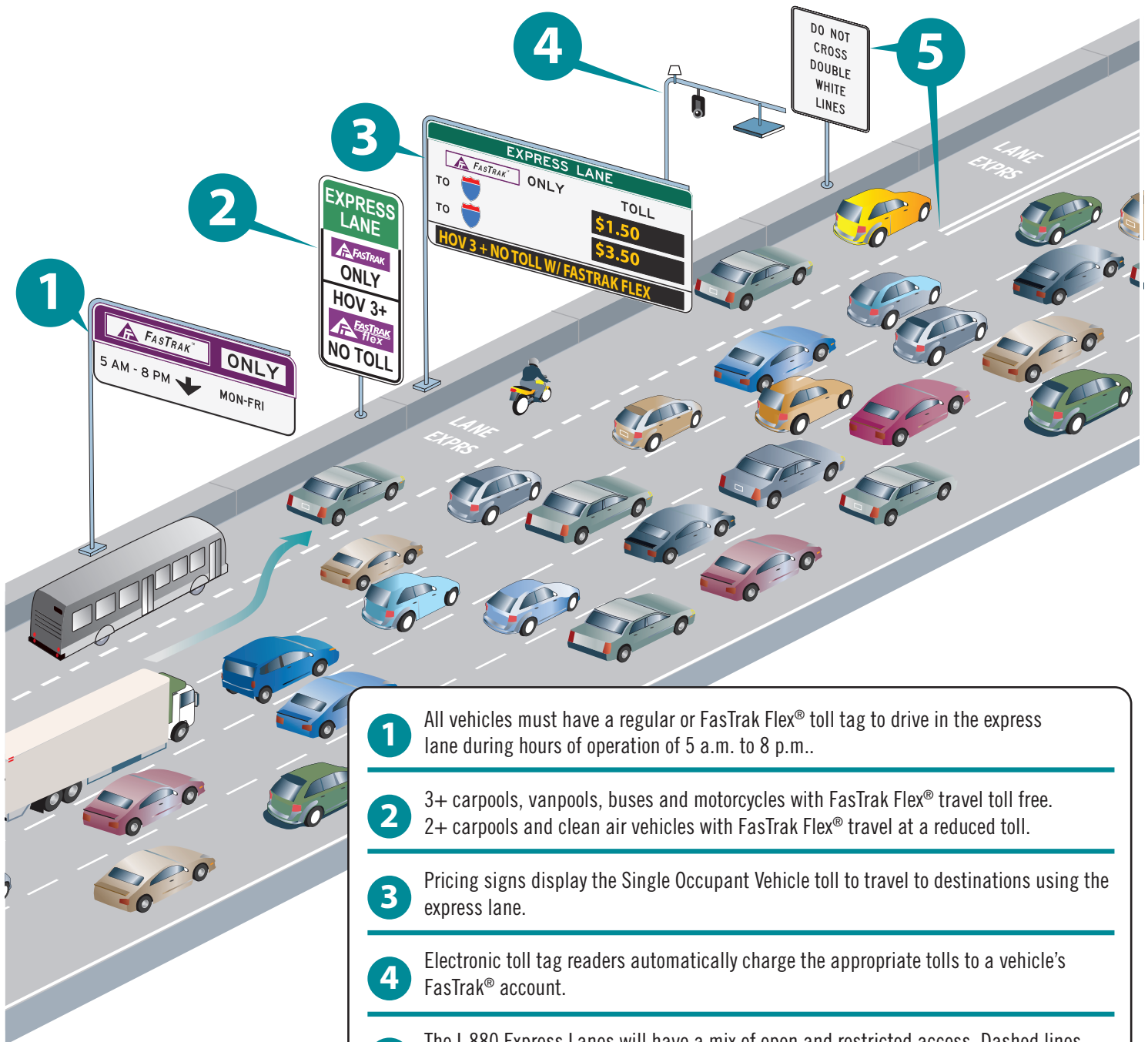
The Metropolitan Transportation Commission (MTC) is converting the existing I-880 HOV lanes that run from Hegenberger Road to Dixon Landing Road in the southbound direction and from Dixon Landing Road to Lewelling Blvd. in the northbound direction to express lanes. The conversion involves lane striping and installing sign structures, signs, FasTrak® toll tag readers, traffic monitoring video cameras, a data communications network, lighting, median barrier replacement and CHP observation areas. The highway is also being widened in three locations to accommodate merge lanes into and out of the future express lanes. This project is coordinated with Caltrans' project to replace the median barrier on I-880.

I-880 PROJECT PARTNERS



HOW THE I-880 EXPRESS LANES WORK

For more information about Bay Area Express Lanes, visit expresslanes.511.org.



- 1** All vehicles must have a regular or FasTrak Flex[®] toll tag to drive in the express lane during hours of operation of 5 a.m. to 8 p.m..
- 2** 3+ carpools, vanpools, buses and motorcycles with FasTrak Flex[®] travel toll free. 2+ carpools and clean air vehicles with FasTrak Flex[®] travel at a reduced toll.
- 3** Pricing signs display the Single Occupant Vehicle toll to travel to destinations using the express lane.
- 4** Electronic toll tag readers automatically charge the appropriate tolls to a vehicle's FasTrak[®] account.
- 5** The I-880 Express Lanes will have a mix of open and restricted access. Dashed lines show where it is OK to enter and exit the express lanes, while double white lines show where it is not OK.

WHY EXPRESS LANES?

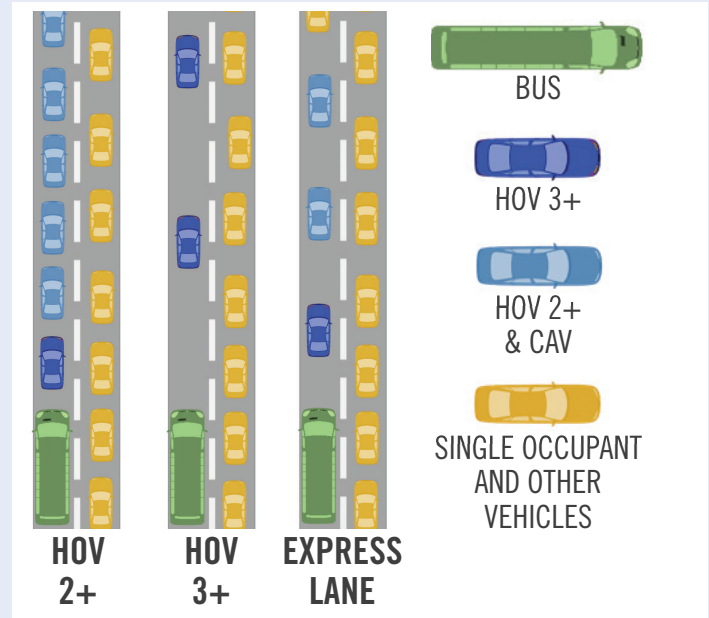
Between 2015 and 2040, the Bay Area's population is expected to grow about 25% and employment about 17%.* Funding and land to expand the transportation network are limited however, so we need to move more people on the existing network. Today, the I-880 carpool lanes are over capacity with carpools, buses, clean air vehicles and cheaters and do not always provide a speedier trip. Express lanes provide a way to decrease carpool lane congestions by allowing 3+ carpools to travel toll-free and encouraging 2-person carpools and clean air vehicles with discounted tolls. Raising the occupancy requirement to 3+ without tolling would likely lead to unused carpool lane capacity and more crowded general purpose lanes. Tolls are set to ensure lane space is well used while providing faster lane speeds.

EXPRESS LANE BENEFITS

- Provides a more reliable trip
- Ensures use of all lane capacity
- Reduces carpool cheating
- Provides tools to manage traffic flow
- Provides many types of vehicles the opportunity to use the lanes
- Rewards carpools and clean air vehicles
- Grows the carpool lane network

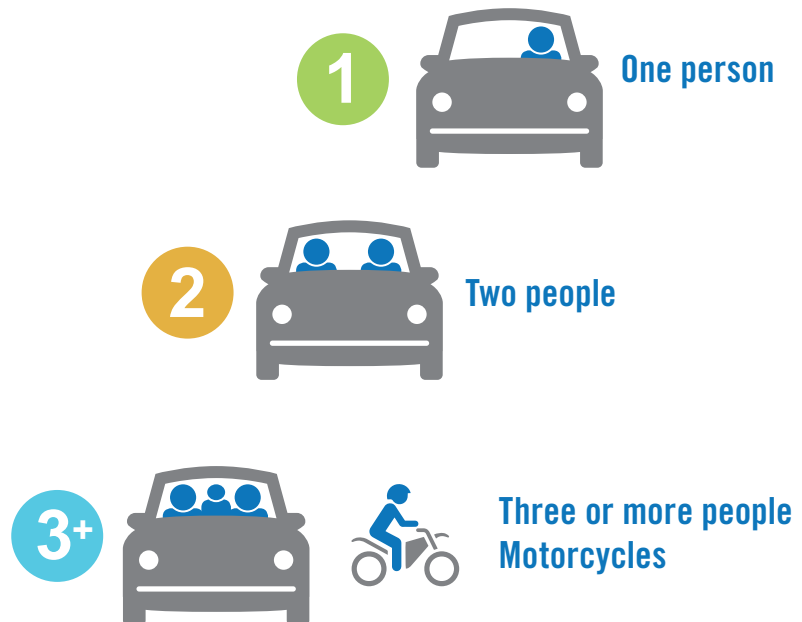
* Data Source: Plan Bay Area 2040

HOW EXPRESS LANES HELP:



FasTrak Flex®

Carpools, vanpools and other eligible vehicles will need FasTrak Flex® toll tags to travel toll free in express lanes. Eligible clean air vehicle drivers will need to apply for a "Clean Air Vehicle" FasTrak Flex® toll tag. Before driving, move the switch to show the number of people in the vehicle. Solo drivers can use regular FasTrak® toll tags or FasTrak Flex® toll tags set in the "1" position. Learn more at bayareafastrak.org.



WHAT ARE EXPRESS LANES?

Express lanes are specially designated highway lanes that allow vehicles to pay tolls or travel toll-free if the vehicle meets designated toll-free requirements. Tolls increase as traffic increases and decrease as traffic decreases.

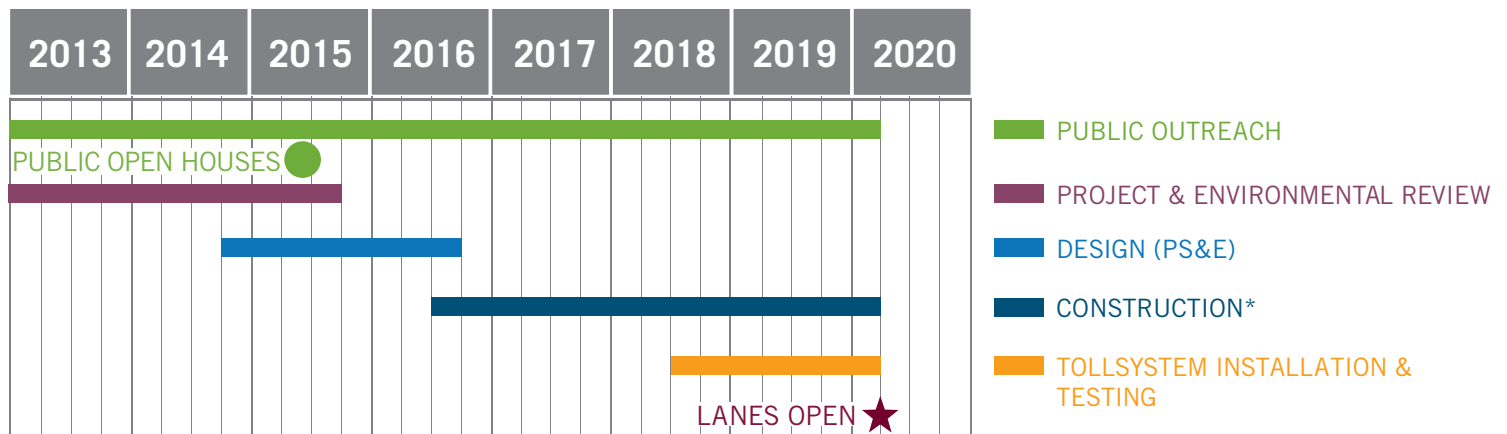
I-880 EXPRESS LANE OPERATIONS

- All vehicles need FasTrak® or FasTrak Flex® to use the lanes
- Hours of operation: 5 a.m. to 8 p.m. Monday through Friday
- 3+ person carpools, vanpools, motorcycles and buses travel toll free
- 2-person carpools travel at a 50% discounted toll
- Eligible Clean Air Vehicles travel at a 50% discounted toll
- Solo drivers travel at a full toll
- The lanes will be a mix of open and restricted access
- The maximum toll is determined by vehicle demand

OPERATING AUTHORITY

The Metropolitan Transportation Commission (MTC) and the Bay Area Toll Authority (BATA) have formed a Joint Powers Authority (JPA) to develop and operate MTC's express lanes. The majority of the JPA's five voting members represent the three counties where its lanes are located: Alameda, Contra Costa and Solano. The JPA will make policy and operational decisions, such as toll rates, project phasing and use of revenue.

EXPRESS LANE PROJECT SCHEDULE



*Includes I-880 median barrier improvements.

PROJECT COST

The total cost for this I-880 project is approximately \$132.5 million, which includes planning, design, construction, utilities, and toll system integration.



expresslanes.511.org

info@BayAreaExpressLanes.org • (415) 778-6655