

From: n mdiz
To: info@planbayarea.org
Subject: Plan 2040 does not work for Solano County
Date: Thursday, June 1, 2017 9:30:46 AM
Attachments: [Peabody at Vanden.PNG](#)

To Whom It May Concern:

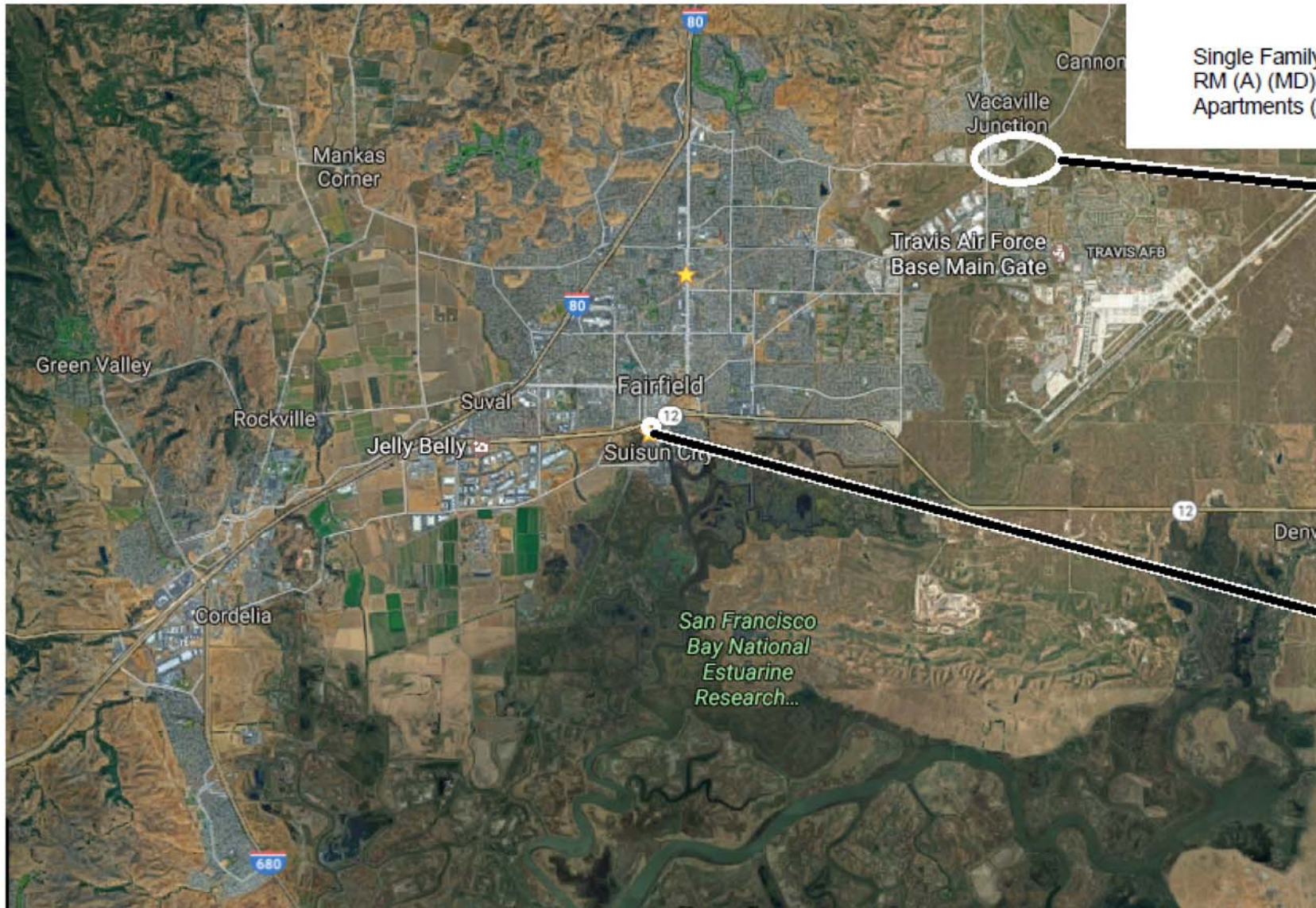
Plan 2040 is tailor fit for communities that are DOMINANTLY influenced by mass transit. Solano county does not fit the model you are encouraging.

We depend on roads and need the improvement and repair of our roads to be the major focus for our county.

Attached is a map that shows the cities of Fairfield and Suisun. It shows that the majority of us who live here will not benefit from goals that better serve cities like San Francisco.

Nora Dizon

Small section benefits



Housing
Type

Estimated
Number of
Units

Single Family
RM (A) (MD)
Apartments (A)

924-1709
1610-2254
1908-2793

**Future
Train
Station**

**Suisun
City
Train
Station**